

For further information on our Portofino Development please contact our sales team at Need2View:

Tel: 0115 9680809

Fax: 0115 9680877

Mobile: 0797 3436011

E-mail: sales@need2view.co.uk

www.need2view.co.uk



portofino

CONTEMPORARY LIVING



THE PROPERTIES

The contemporary properties range from two bedroom apartments, a two bedroom bungalow and three and four bedroom family homes.



Two, three and four bedroom homes FROM £115,000

The details, specification of the properties, illustrations and floor and site plans in this document are a general description only and are subject to change without notification. These documents do not have a present or contractual basis.

For further information on our Portofino Development please contact our sales team at Need2View:

Tel: 0115 9680809

Fax: 0115 9680877

Mobile: 0797 3436011

E-mail: sales@need2view.co.uk

www.need2view.co.uk



portofino

CONTEMPORARY LIVING



THE SITE

The properties are situated on a cul-de-sac, accessible from Winifred Street. The rear of the site adjacent to a mix of private dwellings.

There are allocated and additional parking areas on site, contained by grassed and paved areas.

Grassed and further paved landscaping to the rear of the properties complete the surroundings.

Two Bedroom Apartments
Four Bedroom Houses
Three Bedroom Houses
Three Bedroom Houses
Two Bedroom Bungalow

Two, three and four bedroom homes FROM £115,000

The details, specification of the properties, illustrations and floor and site plans in this document are a general description only and are subject to change without notification. These documents do not have a present or contractual basis.

For further information on our Portofino Development please contact our sales team at Need2View:
 Tel: 0115 9680809
 Fax: 0115 9680877
 Mobile: 0797 3436011
 E-mail: sales@need2view.co.uk

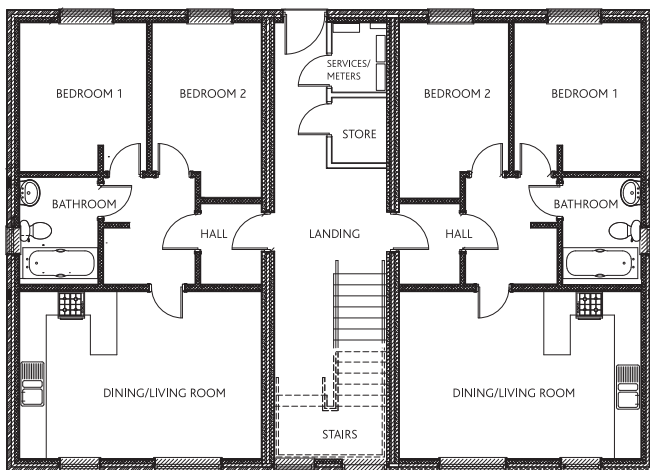


CONTEMPORARY LIVING

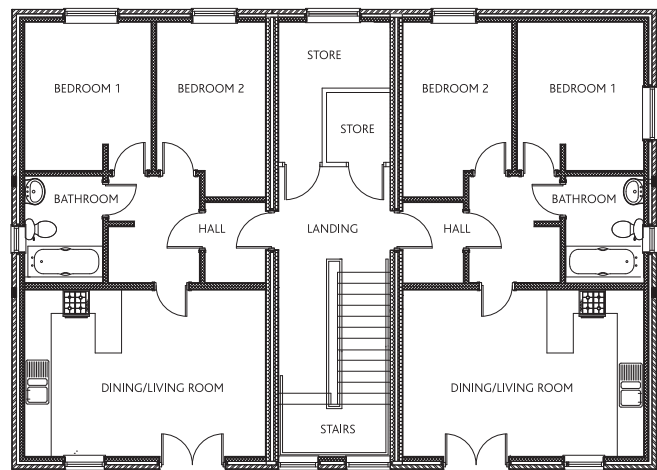
Two bedroom apartments with bathroom and combined dining and living rooms.

Approximate dimensions*

Dining/Living Room	18' x 12'
Bedroom 1	11' x 9'
Bedroom 2	13' x 8'



GROUND FLOOR



FIRST/SECOND FLOOR LAYOUTS

FEATURES

- White uPVC windows throughout
- Pitched slate to roof and slate detail to window canopies
- Landscaping to external areas with corbled hardstanding

INTERNAL FEATURES

- Individually styled Italian designed kitchens and bathrooms
- Security systems
- High quality fixtures and fittings

Two Bedroom Apartments
Four Bedroom Houses
Three Bedroom Houses
Three Bedroom Houses
Two Bedroom Bungalow

Two, three and four bedroom homes FROM £115,000

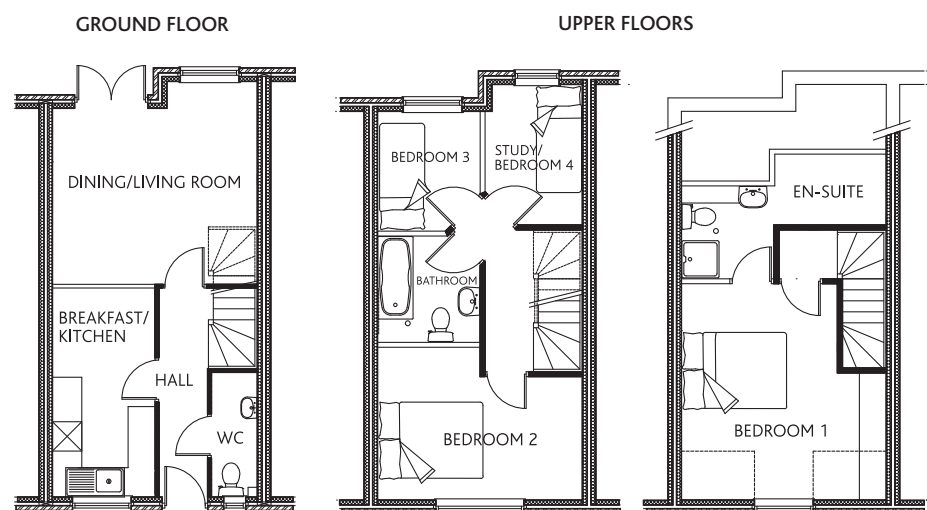
The details, specification of the properties, illustrations and floor and site plans in this document are a general description only and are subject to change without notification. These documents do not have a present or contractual basis. * All dimensions shown are approximate internal measurements only.

For further information on our Portofino Development please contact our sales team at Need2View:
 Tel: 0115 9680809
 Fax: 0115 9680877
 Mobile: 0797 3436011
 E-mail: sales@need2view.co.uk



CONTEMPORARY LIVING

Four bedroom home over three floors with en-suite with shower to master bedroom, family bathroom on first floor, combined dining/living room with patio doors to ground floor, breakfast kitchen and guest's WC to hallway.



Approximate dimensions*

Dining/Living Room	13.5' x 13.5'
Breakfast/Kitchen	14' x 7'
Bedroom 1	14.5' x 13.5'
Bedroom 2	10' x 13.5'
Bedroom 3	8' x 8'
Study/Bedroom 4	9.5' x 6.5'

FEATURES

- White uPVC windows throughout
- Pitched slate to roof and slate detail to window canopies
- Landscaping to external areas with corbled hardstanding

INTERNAL FEATURES

- Individually styled Italian designed kitchens and bathrooms
- Security systems
- High quality fixtures and fittings

- Two Bedroom Apartments
- Four Bedroom Houses
- Three Bedroom Houses
- Three Bedroom Houses
- Two Bedroom Bungalow

Two, three and four bedroom homes FROM £115,000

The details, specification of the properties, illustrations and floor and site plans in this document are a general description only and are subject to change without notification. These documents do not have a present or contractual basis. * All dimensions shown are approximate internal measurements only.

For further information on our Portofino Development please contact our sales team at Need2View:

Tel: 0115 9680809

Fax: 0115 9680877

Mobile: 0797 3436011

E-mail: sales@need2view.co.uk

www.need2view.co.uk



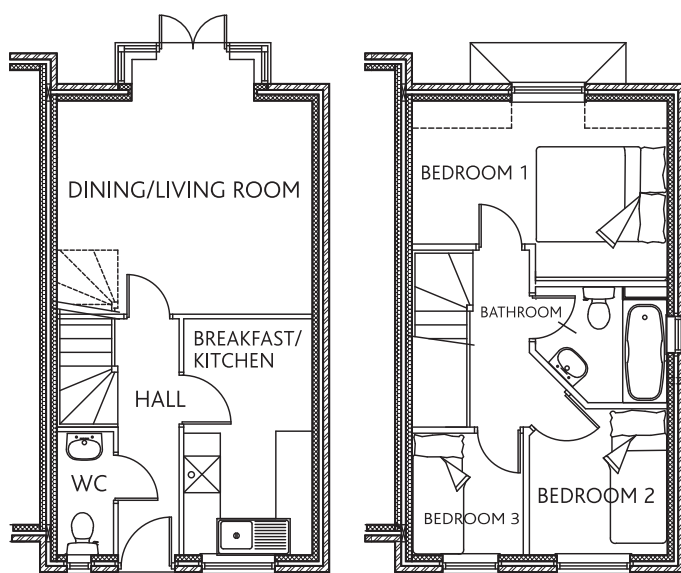
portofino

CONTEMPORARY LIVING

Three bedroom home over two floors with family bathroom on first floor, combined dining/living room with patio doors to ground floor, breakfast kitchen and guest's WC to hallway.

Approximate dimensions*

Dining/Living Room	13.5' x 11.5'
Breakfast/Kitchen	12' x 7'
Bedroom 1	13' x 8'
Bedroom 2	8' x 7'
Bedroom 3	6.5' x 6.5'



FEATURES

- White uPVC windows throughout
- Pitched slate to roof and slate detail to window canopies
- Landscaping to external areas with corbled hardstanding

INTERNAL FEATURES

- Individually styled Italian designed kitchens and bathrooms
- Security systems
- High quality fixtures and fittings

Two Bedroom Apartments

Four Bedroom Houses

Three Bedroom Houses

Three Bedroom Houses

Two Bedroom Bungalow

Two, three and four bedroom homes FROM £115,000

The details, specification of the properties, illustrations and floor and site plans in this document are a general description only and are subject to change without notification. These documents do not have a present or contractual basis. * All dimensions shown are approximate internal measurements only.

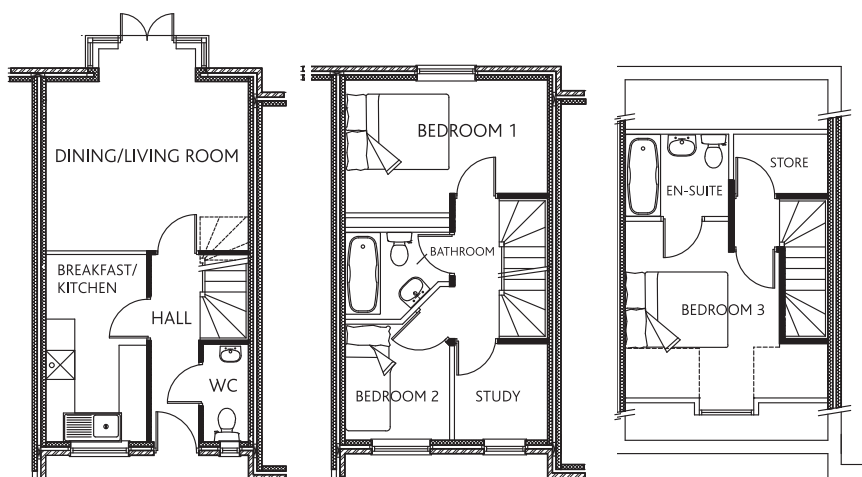
For further information on our Portofino Development please contact our sales team at Need2View:
 Tel: 0115 9680809
 Fax: 0115 9680877
 Mobile: 0797 3436011
 E-mail: sales@need2view.co.uk

www.need2view.co.uk



CONTEMPORARY LIVING

Three bedroom home over three floors with en-suite with shower and bath to master bedroom, family bathroom on first floor, combined dining/living room with patio doors to ground floor, breakfast kitchen and guest's WC to hallway.



Approximate dimensions*

Dining/Living Room	14' x 11.5'
Breakfast/Kitchen	12.5' x 8'
Bedroom 1	13.5' x 8'
Bedroom 2	8' x 8.5'
Bedroom 3	9' x 9'
Study	6.5' x 6.5'

FEATURES

- White uPVC windows throughout
- Pitched slate to roof and slate detail to window canopies
- Landscaping to external areas with corbled hardstanding

INTERNAL FEATURES

- Individually styled Italian designed kitchens and bathrooms
- Security systems
- High quality fixtures and fittings

- Two Bedroom Apartments
- Four Bedroom Houses
- Three Bedroom Houses
- Three Bedroom Houses**
- Two Bedroom Bungalow

Two, three and four bedroom homes FROM £115,000

The details, specification of the properties, illustrations and floor and site plans in this document are a general description only and are subject to change without notification. These documents do not have a present or contractual basis. * All dimensions shown are approximate internal measurements only.

For further information on our Portofino Development please contact our sales team at Need2View:
 Tel: 0115 9680809
 Fax: 0115 9680877
 Mobile: 0797 3436011
 E-mail: sales@need2view.co.uk



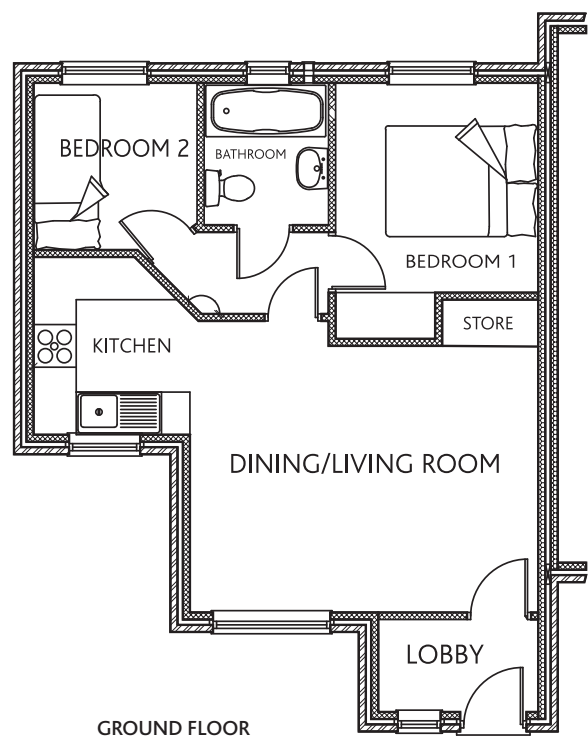
CONTEMPORARY LIVING

www.need2view.co.uk

A two bedroom single storey bungalow with bathroom and combined kitchen, dining and living room. Separate lobby to front door.

Approximate dimensions*

Dining/Living Room	16' x 14'
Kitchen	8' x 8'
Bedroom 1	9' x 9'
Bedroom 2	7.5' x 7.5'



FEATURES

- White uPVC windows throughout
- Pitched slate to roof and slate detail to window canopies
- Landscaping to external areas with corbled hardstanding

INTERNAL FEATURES

- Individually styled Italian designed kitchens and bathrooms
- Security systems
- High quality fixtures and fittings

- Two Bedroom Apartments
- Four Bedroom Houses
- Three Bedroom Houses
- Three Bedroom Houses
- Two Bedroom Bungalow**

Two, three and four bedroom homes FROM £115,000

The details, specification of the properties, illustrations and floor and site plans in this document are a general description only and are subject to change without notification. These documents do not have a present or contractual basis. * All dimensions shown are approximate internal measurements only.